

# **BRAIDED WIRE**

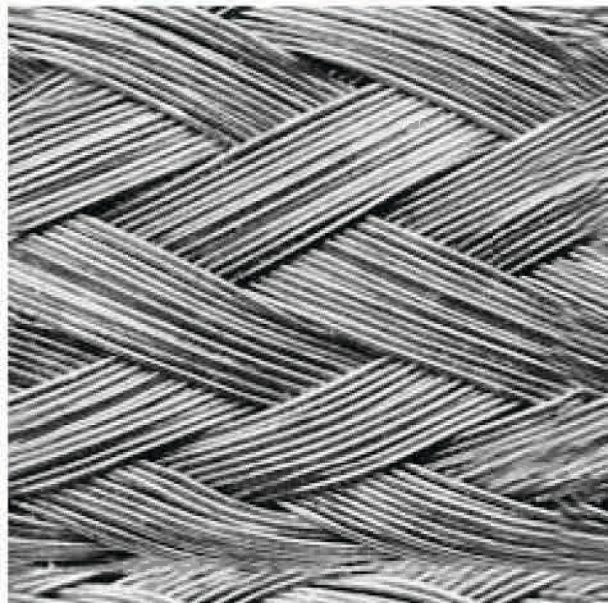


Mind's Eye Companies Worldwide, Inc. designs and manufactures dependable custom-braided wiring harnesses built to meet the exacting needs of any industry. Our wire harness braiding equipment allows us to define the right solution for your operation, addressing variables from durability to abrasion resistance to tensile strength and aesthetics.

Harsh environments demand well-crafted assemblies. An industrial wire harness may need to perform perfectly for years while being subjected to constant abrasion and vibration. Heavy duty harnesses may need to move quickly in any direction, or withstand shocks that can disengage connections. Will work from your drawings or work with you to fabricate a braided wire harness that includes the right mix of materials, maximizing flexibility, tensile strength, abrasion resistance and durability.

We craft rugged wire harnesses, including IP 67 – rated waterproof harnesses for any kind of environment, including the extremely harsh conditions faced by the oil and gas industries, the military and other government agencies. We serve the automotive, agriculture, solar and wind energy, HVAC and other industrial markets, which demand exactly the kind of abrasion-resistant wire harnesses we specialize in. Our braiding capabilities provide the kinds of wire harness protection demanded by all kinds of equipment, including cranes, HVAC pump and fan Control, pneumatic and hydraulic systems and lift stations – a significant improvement over cable tubing.

Contact our braided wire department for more information:  
[braid@mindseyeco.com](mailto:braid@mindseyeco.com)



## UNINSULATED COPPER & BRAIDED

Mind's Eye produces many different Uninsulated Copper Wire Conductors.

Mind's Eye stocks Bare Solid Soft Drawn (Annealed) Bus Bar Copper Wire, Tinned Solid Copper Wire, Bare Stranded, Tinned Stranded, Topcoat, Overcoat and Prebond Copper Wires.

Mind's Eye specializes in providing quick turns. We can serve your needs with lower minimum order quantities, and have a customer service team that is second-to-none.

### Conductor - Bare Un-insulated Copper

Conductors:

Solid Bare, Stranded Bare

Part Number	AWG	Conductor	Cond. Diam.		Approx. LBS./M FT.	Std. Put-Up
			in	mm		
1001BBUS	10	Solid	0.102	2.59	31.74	1.58 M/FT
1201BBUS	12	Solid	0.081	2.06	20.00	2.50 M/FT
1401BBUS	14	Solid	0.0641	1.63	12.55	3.98 M/FT
1601BBUS	16	Solid	0.0508	1.29	7.90	6.33 M/FT
1801BBUS	18	Solid	0.0403	1.02	5.00	10.00 M/FT
2001BBUS	20	Solid	0.032	0.81	3.12	16.00 M/FT
2201BBUS	22	Solid	0.0254	0.65	2.00	25.00 M/FT

Other put-up options are available

### Conductor - Tinned Un-insulated Copper

Conductors:

Solid Tinned, Stranded Tinned

Part Number	AWG	Conductor	Cond. Diam.		Approx. LBS./M FT.	Std. Put-Up
			in	mm		
1001TBUS	10	Solid	0.102	2.59	31.74	1.58 M/FT
1201TBUS	12	Solid	0.081	2.06	20.00	2.50 M/FT
1401TBUS	14	Solid	0.0641	1.63	12.55	3.98 M/FT
1601TBUS	16	Solid	0.0508	1.29	7.90	6.33 M/FT
1801TBUS	18	Solid	0.0403	1.02	5.00	10.00 M/FT
2001TBUS	20	Solid	0.032	0.81	3.12	16.00 M/FT
2201TBUS	22	Solid	0.0254	0.65	2.00	25.00 M/FT
2301TBUS	23	Solid	0.0226	0.57	1.54	6.50 M/FT
2401TBUS	24	Solid	0.0201	0.51	1.25	40.00 M/FT
2601TBUS	26	Solid	0.0159	0.40	0.80	62.50 M/FT

Other put-up options are available