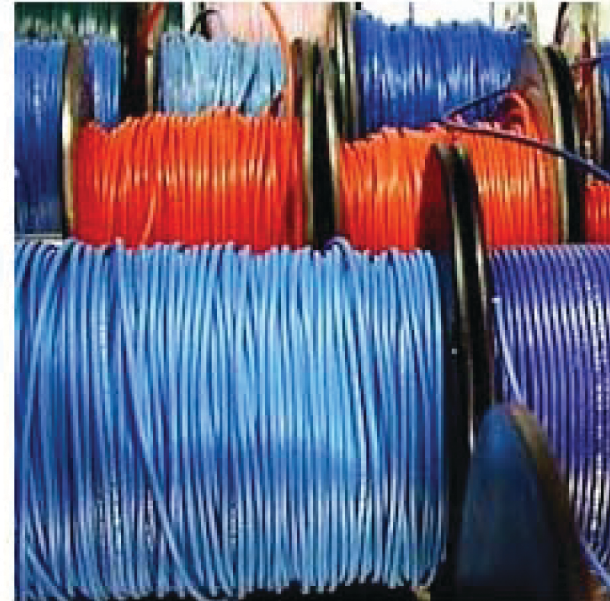


Industrial Wire & Cable

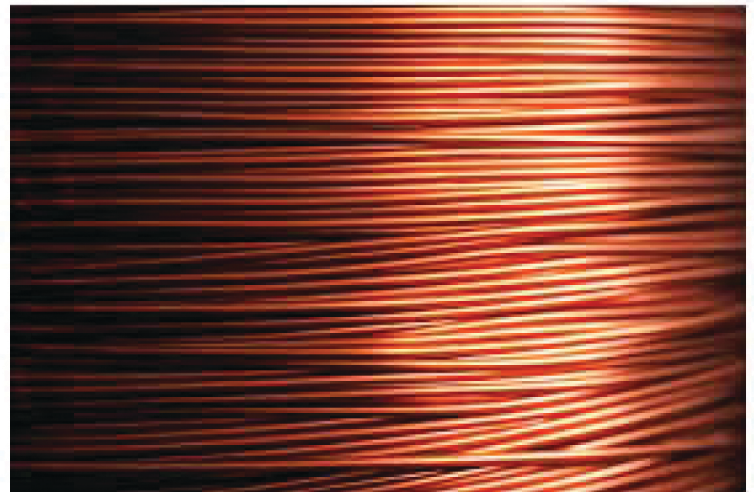


Wire and Cable is supplied to a variety of industries. Industrial cable is used in tough, demanding applications. Industrial cable works in high temperature environment as well as high-voltage uses. It can withstand harsh treatment such as abrasion and contact with flames. Industrial cable is used in many applications, including industrial robotics, power generation, seaport cranes, and petrochemical and natural gas.



Mind's Eye Companies Worldwide, Inc. manufactures:

- Instrumentation Cable (300 Volt)
- Instrumentation Cable (600 Volt)
- Flexible Control and Flexible Power Cable (600 Volt)
- Multi – Conductor Control Cable and Power Cable (600 Volt)
- Industrial Power Cable (600 Volt)
- Industrial Medium Voltage Power Cable (2.4 kV-35 kV)
- Industrial Armored Cable (600V-35 kV)



Contact us for specifications and wire designed for your applications. We offer a full selection of wires and cable for every application. We will work to fill your needs. Contact our industrial wire division for assistance:
industrialwire@mindseyeco.com

Building Fixture Wire

Mind's Eye is a premier manufacturer of Building Wire and Fixture Wire.

Mind's Eye specializes in fast deliveries and lower minimum order quantities to provide clients with what they need quickly, at a reasonable price and in quantities they need. Our wire meets or exceeds the standards of the National Electric Code. We produce RoHS Compliant TFN (ZIPR) to UL 66 Standard for Fixture Wires, RoHS Compliant TFFN Wire, and RoHS Compliant THHN(ZLGR) Wire to UL 83 Standard for Thermoplastic Insulated Wires.

Mind's Eye provides high-quality Building Wire for residential, commercial and industrial buildings. Our Building Wire can also be found in Mobile Homes, Recreational Vehicles, Boats and Substations. Our THHN Building Wire is made to the exacting specifications outlined in UL Standard 83 Thermoplastic-Insulated Wires and Cables. Mind's Eye manufactures TFN and TFFN wires to meet UL Standard 66 for Fixture Wires.

Fixture Wire from Mind's Eye is used in a number of ways - in conduit and other raceways and in control circuits. Fixture Wire from Mind's Eye can be found in a wide variety of appliances, as well as a number of different lighting fixtures.

Mind's Eye is a leading supplier of Fixture Wire, PVC Insulated Building Wire and PVC/Nylon Insulated Building Wire. The Conductors for our Building Wire and Fixture Wire are Solid, Bare Stranded, Solid Tinned, and Tinned Stranded.

Fixture Wire - 600 Volts

Description:

TF, TFF	60c
TFN, TFFN	90c
CSA - AWM	90c
CSA - TEWN	105c

Conductors:

Solid, Bare Stranded, Tinned Stranded



TF - .031 PVC

Part Number	AWG	Conductor	Cond. Diam.		OD		Approx. LBS./M FT.	Std. Put-Up
			in	mm	in	mm		
1801BTF	18	SOLID	0.040	1.016	0.103	2.616	9.15	5 M/FT
1601BTF	16	SOLID	0.051	1.295	0.113	2.870	12.70	5 M/FT

TFF - .031 PVC

Part Number	AWG	Conductor	Cond. Diam.		OD		Approx. LBS./M FT.	Std. Put-Up
			in	mm	in	mm		
1816BTFF	18	16/30	0.048	1.219	0.110	2.794	9.70	5 M/FT
1619BTFF	16	19/0117	0.058	1.473	0.121	3.073	13.11	5 M/FT

TFN - .016 PVC/.005 NYLON

Part Number	AWG	Conductor	Cond. Diam.		OD		Approx. LBS./M FT.	Std. Put-Up
			in	mm	in	mm		
1801BTFN	18	SOLID	0.040	1.016	0.083	2.108	7.21	5 M/FT
1601BTFN	16	SOLID	0.051	1.295	0.093	2.362	10.53	5 M/FT

TFFN - .016 PVC/.005 NYLON

Part Number	AWG	Conductor	Cond. Diam.		OD		Approx. LBS./M FT.	Std. Put-Up
			in	mm	in	mm		
1816BTFFN	18	16/30	0.048	1.219	0.090	2.286	7.50	5 M/FT
1619BTFFN	16	19/0117	0.058	1.473	0.100	2.540	10.80	5 M/FT
1626BTFFN	16	26/30	0.059	1.499	0.101	2.565	11.03	5 M/FT

UL FILE NO.	E-101906
CSA FILE NO.	TEWN LL29012 AWM LL38335

PVC Insulated Building Wire - 600 Volts

Description:

TW - 60c and THW - 75c OIL RESISTANT I



Conductors:

Solid, Bare Stranded, Tinned Stranded



Part Number	AWG	Conductor*	Cond. Diam.		OD		Approx. LBS./M FT.	Std. Put-Up
			in	mm	in	mm		
1401BTHW	14	SOLID	0.064	1.626	0.127	3.226	18.20	2.5 M/FT
1419BTHW	14	19/0147	0.071	1.803	0.133	3.378	18.77	2.5 M/FT
1201BTHW	12	SOLID	0.081	2.057	0.144	3.658	26.60	2.5 M/FT
1219BTHW	12	19/0185	0.091	2.311	0.153	3.886	27.26	2.5 M/FT
1001BTHW	10	SOLID	0.102	2.591	0.164	4.166	39.60	2 M/FT
1019BTHW	10	19/0234	0.116	2.946	0.178	4.521	40.63	2 M/FT
0819BTHW	8	19/0295	0.147	3.734	0.240	6.096	67.75	1.5 M/FT
0619BTHW	6	19/0372	0.185	4.699	0.306	7.772	109.43	1 M/FT
0419BTHW	4	19/0469	0.235	5.969	0.356	9.042	164.29	1 M/FT

* AVAILABLE IN ALTERNATE STRANDINGS

UL FILE NO.	E-80255
UL FILE NO.	E-80256

PVC/Nylon Insulated Building Wire - 600 Volts

Description:

DUAL RATED THHN - 60c and THW - 75c OIL RESISTANT II



Conductors:

Solid, Bare Stranded, Tinned Stranded



Part Number	AWG	Conductor*	Cond. Diam.		OD		Approx. LBS./M FT.	Std. Put-Up
			in	mm	in	mm		
1401BTHHN	14	SOLID	0.064	1.626	0.107	2.718	15.67	2.5 M/FT
1419BTHHN	14	19/0147	0.071	1.803	0.113	2.870	16.18	2.5 M/FT
1201BTHHN	12	SOLID	0.081	2.057	0.124	3.150	23.75	2.5 M/FT
1219BTHHN	12	19/0185	0.091	2.311	0.133	3.378	24.23	2.5 M/FT
1001BTHHN	10	SOLID	0.102	2.591	0.154	3.912	37.37	2 M/FT
1019BTHHN	10	19/0234	0.116	2.946	0.168	4.267	38.28	2 M/FT
0819BTHHN	8	19/0295	0.147	3.734	0.222	5.639	62.97	1.5 M/FT
0619BTHHN	6	19/0372	0.185	4.699	0.259	6.579	95.55	1 M/FT
0419BTHHN	4	19/0469	0.235	5.969	0.327	8.306	153.30	1 M/FT

* AVAILABLE IN ALTERNATE STRANDINGS

UL FILE NO.	E-80255
UL FILE NO.	E-80256